

**CAMBRIDGE
MIDDLE
SCHOOL**
CONNECT · INSPIRE · GROW



PROSPECTUS
2021
YEAR 7-10



Contents

Welcome from Principal	4
Current Staff	5
Important Dates	8
Enrolment Zone and Enrolment Procedure	9
Liaison Procedure 2020	10
Class Placement Procedure	11
Middle Schooling	12
Curriculum	12
Kapa Haka and Te Reo Maaori	12
Celebrations	13
Arts Academy	13
P.T.A.	14
Whaanau	14
School Services	14
Student Leaders	15
Badges	15
External Services	15
Vision, Values and Strategic Goals	16
Sports Leaders	17
CMS Ambassadors	17
Elite Teams	17
Board of Trustees	18
Opportunities at CMS	19
Home Learning	19
Sports	20
International Students	
Japanese Exchange	20
PB4L In Class Behaviour	
Management	21
Communication	22
Enrolment/Annual Student Costs/	
Donations	23
School Guidelines	24
Transport	25
Devices	26
Uniform	28



Welcome to Cambridge Middle School

Mihi ki a koutou katoa,

At Cambridge Middle School we believe the emerging adolescent is a very special and unique age group to teach. It takes a balance of teaching knowledge, relationship building, caring and humour to be successful with middle school children. Children of this age are developing self-identity, opinions and an understanding of the world around them, and it takes people with a specific skill set and understanding to nurture them. We have a strong passion and commitment to developing programmes that support the academic, sporting, social and cultural development of our students. Our responsibility is to ensure that your child continues to receive a high quality education within a safe, respectful and supportive environment.

In the New Zealand Curriculum 'Learning in Years 7-10' is listed as its own learning pathway. Research indicates that these years are second only in developmental learning to the first 3 years of life. Research also suggests that the middle years of learning is the time when young people begin to make choices as individuals that will impact significantly on their lives. This is why we have a strong philosophy of providing a diverse range of opportunities for children to explore widely and we deliver them through our key school values.

Our teachers have a passion for teaching and learning in the middle years and are committed to ongoing professional development. We have high expectations

of student achievement in all facets of school life and believe all learners need to be supported to develop skills and find their passion to become life-long learners. Promoting this in a positive and caring environment will ensure all students are prepared as effectively as possible, to become confident and connected citizens, who contribute positively to the Cambridge community.

Visitors to our school are impressed with the quality of learning programmes and the array of activities and opportunities available inside and outside of the classroom. Our students participate in a large range of sporting, cultural and academic events and competitions at local regional and national levels.

We are aware that the transition to Middle School can be significant and we put a lot of effort into working with you and your child's contributing school to try to ensure this is as smooth for your child as possible. We are excited to have you as part of our CMS community and we look forward to working in partnership with you and your children.



**Naku noa,
Daryl Gibbs**

Current Staff

Senior Leadership Team



Daryl Gibbs
PRINCIPAL



Julie Dawick
DEPUTY PRINCIPAL



Tagget Christophersen
DEPUTY PRINCIPAL



Bridget Watkins
DEPUTY PRINCIPAL



Alistair Martin
ASSISTANT PRINCIPAL

Kauri



Trisha Honey
Room 5, Year 7
Team Leader



Benjamin Heaton
Room 2, Year 8



Vicky Gleeson
Room 17, Year 7



Danielle Fuller
Room 18, Year 8

Manaia



Natalie Marsh
Room 15, Year 7
Team Leader



Tian Hancke
Room 16, Year 8



Natala Pettit
Room 24, Year 7



Katie Van Dyk
Room 1,
Year 8, 9, 10

Koowhai



Ian Harrison
Room 13, Year 8
Team Leader



Katie Verhoeven
Room 12, Year 8



Georgina Glenn
Room 14, Year 7



Suyen Steyn
Room 21, Year 7

Rata



Belle Paterson
Room 8, Year 8
Team Leader



Mike Johnson
Room 9, Year 7



Jacira de Hoog
Room 6, Year 7



Leanne Haddock
Room 6, Year 7



Laura Stutz
Room 7, Year 8



Natalie Kirk
Room 7, Year 8

Current Staff

Paakura



**Deirdre
Finn**

Room 22, Year 8
Team Leader



**Gareth
Cogan**

Room 23, Year 7



**Margot
Horner**

Room 10, Year 8



**Shelley
Kennerley**

Room 11, Year 8

Pounamu



**Theresa
Valvoi**

Room 20, Year 8
Team Leader



**Katie
Paterson**

Room 19, Year 7



**Brianne
Kellner**

Room 3, Year 7



**Claire
Bush**

Room 4, Year 8



**Maraëa
Thomson**

On Leave

Specialist Team



**Suzy
Reid**

Visual Art
HOD



**Robyn
Gibbeson**

Food Technology



**Catherine
Bell**

Fabric



**Jo
Wright**

Science



**Sarah
Nelson**

Digi Tech



**Anna
Johnson**

Music



**Tracey
Andrews**

Performing Arts
Team Leader



**Taryn
Power**

ACE Teacher
SENCO for Learning



**Anita
Hawkins**

Sports
Co-ordinator



**Dr Ann
Easter**

International
Student Director



**Luke
Hatton**

IT Support

Current Staff

Administration



Karyn Powell
Office
Administrator



Angela Welten
Finance Officer



Paula Harvey
Admin Support



Cherry Webber
Librarian

Learning Support Staff



Toni Paton



Arleen Bridge



Christine O'Connor



Linnet Hatton



Lorraine Shaw



Delwyn Hawkings



Cathy McKay

Caretaker

Cleaner



Colin Hatton



Colin Pruden



Term One Tue 2 February to Fri 16 April
Term Two Mon 3 May to Fri 9 July
Term Three Mon 26 July to Fri 1 October
Term Four... Mon 18 October to Mon 13 December

Monday 1 March* and **Wednesday 3 March**
Monday 26 July* and **Wednesday 28 July**

Public Holidays

Waitangi Day	Monday 8 February
Easter	Friday 2 April
	Monday 5 April
	Tuesday 6 April
Queen's Birthday	Monday 7 June
Teacher Only Day	Friday 11 June
	Friday 3 September
	Friday 22 October
Labour Day	Monday 25 October

8.00am..... Office is manned

8.35am..... First bell

8.40am..... Bell for classes to commence

10.40 - 11.00am.. Interval

12.40 - 1.40pm ... Lunch hour

3.10pm School finishes

3.20pm Students to clear grounds/
building except for:

- Sports/music practice
- When students have been home and returned with parents permission
- When prior arrangements have been made

1. Students access to own classroom before school is determined by room rules.
2. Students have access to grounds and cloakroom etc. prior to 8.00am.



Enrolment Zone

At the time of publication, the Board is in the process of implementing an enrolment scheme to help it manage enrolments, and this will mean that an indication of enrolment will be needed before final enrolments can be confirmed.

With this in mind, please ensure that you fill in and return the enrolment form to your current school office before 26 August 2020.

Once the zone has been finalised by the MOE and we know how many places we have available we will contact any families who are living out-of-zone and a ballot will take place if necessary. Please see our website for proposed zoning map.

Enrolment Procedure

Students attending Leamington, Cambridge East, Roto-o-Rangi, Goodwood, Cambridge Primary and Karapiro are enrolled as a matter of course if in-zone and unless parents notify the contributing school otherwise. Enrolment forms and prospectus will be sent to contributing schools for distribution early Term 3.

Year 6 Open Day
Friday 7 August 2020
for Parents and Students
Two sessions:
9.00am - 10.30am
1.30pm - 3.00pm

Year 6 Orientation Day
Monday 21 September 2020
Tuesday 22 September 2020
for Students only
9.30am - 11.00am both days

Meet the Teacher
Thursday 26 November 2020
for Parents and Students
7.00pm



Liaison Procedure 2020

Year 6 Open Day

Friday 7 August 2020

for Parents and Students

We will hold two sessions during the day for our 2021 prospective students and parents/caregivers. The times are: 9.00am - 10.30am and 1.30pm - 3.00pm.*Please meet in the hall at the beginning of the session. There will be an address by our Senior Leadership Team and tours of our school will be available. It is held throughout a normal school day so usual class time can be observed.

Year 6 Orientation Day

Monday 21 September 2020

Tuesday 22 September 2020

for Students only

This is an opportunity for Year 6's to come and spend a morning orientating themselves at CMS. They will get to experience some time with one of our teachers and will participate in a snippet of life at CMS.

Monday

21 September 2020

9.30am - 11.00am

Schools attending:

- Goodwood
- Cambridge Primary
- Roto-o-Rangi
- Students from other schools

Tuesday

22 September 2020

9.30am - 11.00am

Schools attending:

- Leamington
- Cambridge East
- Karapiro

Meet the Teacher

Thursday 26 November 2020

for Parent and Students

7.00pm

Upon arrival both students and parents will be asked to join their 2021 class teacher. Following this we will have an address by the Senior Leadership Team about life at Cambridge Middle School.

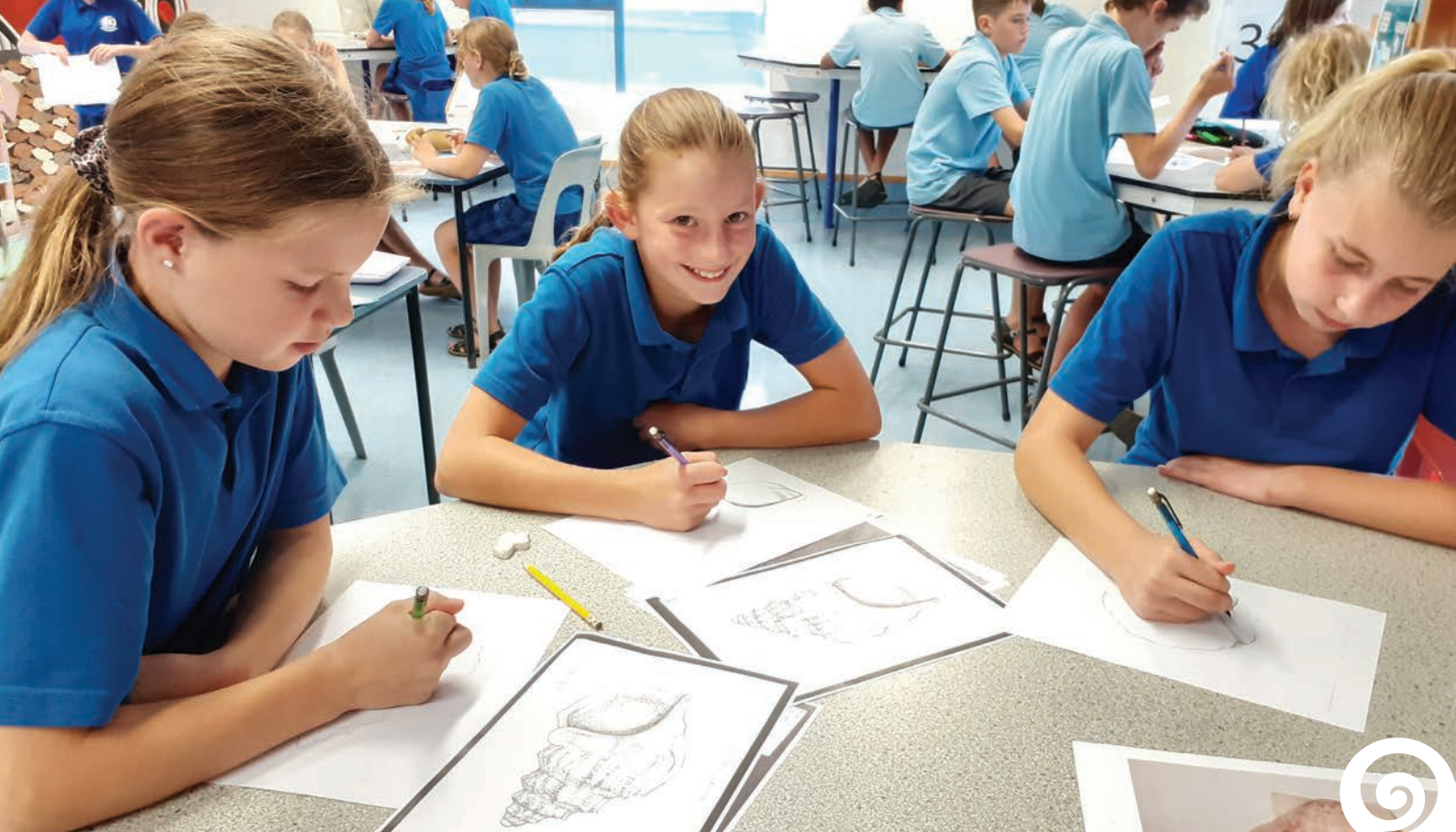
At these sessions, you will be given a brief synopsis of life and expectations within your child's room. It will also give you the opportunity to ask any questions that you may have about Middle Schooling.

Those classes where teachers aren't available as they are new appointments, our Deputy Principals will be in attendance.

Class lists will be available at your child's contributing school before this evening takes place.

It is our intention to make your child's transition as stress-free and enjoyable as possible.

**Please attend the session that best suits your family*



Classroom Placement Process

This is the process that the Senior Leadership Team at Cambridge Middle School follows to place your child with the teacher that best suits them:

- Our Deputy Principals will meet with a member of the Senior Leadership Team at your child's current school to discuss each Year 6 student who is enrolling at Cambridge Middle School for 2021.
- Your child's current teacher completes a profile form for Cambridge Middle School, which tells us a range of information about your child, for example curriculum strengths/needs. This information is also passed on to their new classroom teacher, once classes are finalised.
- After the above is completed our Deputy Principals then read all the student profiles for students enrolling at our school for 2021 and any further information supplied by the contributing school.
- We begin placing each student with a teacher from Cambridge Middle School that we believe will best suit their learning and behaviour needs.

- Once the lists are finalised they are sent out to the contributing school for their current teachers to review to ensure we have not accidentally overlooked any information they supplied to us about the social combinations of students.
- The class lists are shared with parents and students, just prior to our Meet the Teacher night on Thursday 26 November 2020 at 7pm.

You are welcome to come and meet with our Deputy Principals to discuss your child's learning and behaviour needs in more depth. Please contact the school office on office@cms.school.nz or 07 827 5135 to make an appointment. Our Senior Leadership Team will be available at our Open Days if you have any questions.

If you are an out-of-zone enrolment, it is highly recommended that you and your child meet with one of our Deputy Principals.

Middle Schooling

To find out more visit the following links:
www.nzcurriculum.tki.org.nz/Curriculum-resources/Middle-schooling

Once in the Middle Schooling site you can select the following four sites:

- Learning environments;
- Pedagogy;
- Partnerships;
- Engagement

The Ministry of Education has released this site and it has some very informative information and sound research material to guide you.



Curriculum

Cambridge Middle School is charged with providing programmes suited to individual learning needs.

Within our Strategic Plan there is a clear focus on CMS to prepare learners to adapt to an ever changing world and to meet and understand the needs of emerging adolescent learners in a happy and safe environment. This will be enacted throughout our HERO values and diverse curriculum.

Through a range of assessment practices, we gather information that is sufficiently comprehensive to enable the progress and achievement of students to be evaluated.

We will identify students and groups of students, and tailor the curriculum delivery to enhance their learning needs.

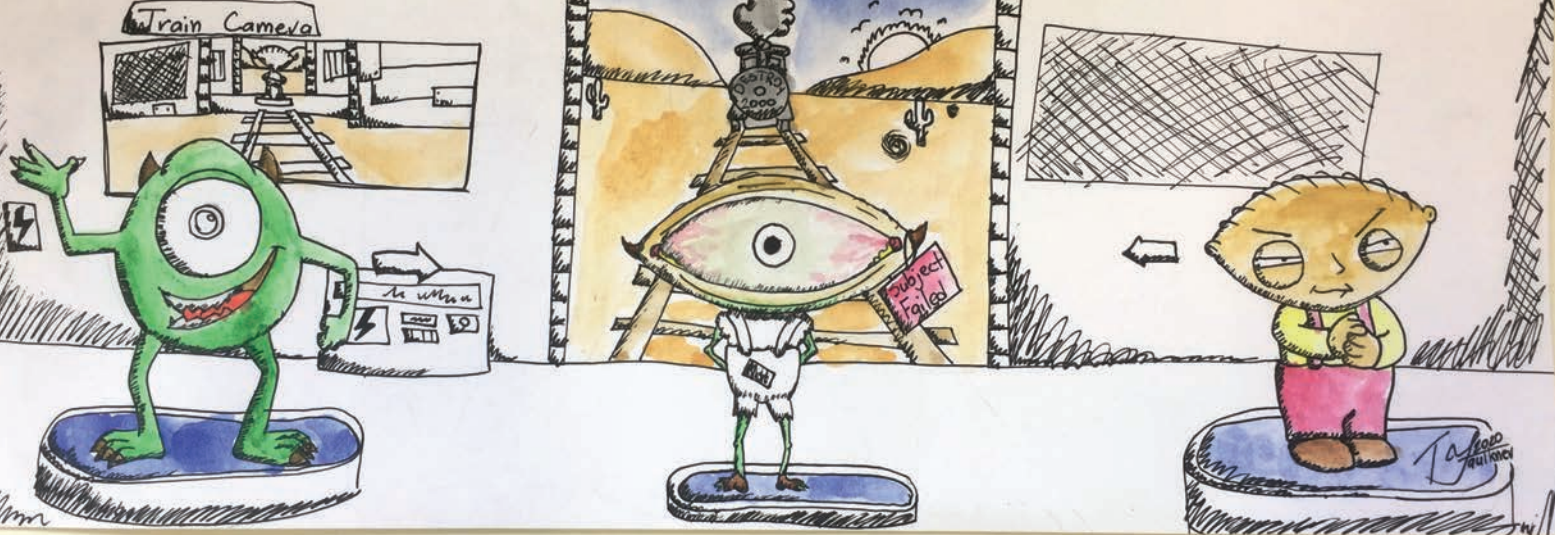
In consultation with the school's Maaori community, we develop and make known to whaanau, policies, plans and targets for improving the achievement of Maaori students.

ENGLISH
THE ARTS
HEALTH & PHYSICAL EDUCATION
MATHEMATICS & STATISTICS
LEARNING LANGUAGES
SCIENCE
SOCIAL SCIENCES
TECHNOLOGY
SCIENCE LABORATORY
CAREERS EDUCATION
TE REO MAAORI

Kapa Haka and Te Reo Maaori

We currently have a Kapa Haka group who perform here at school. They may also join in with our local High School for additional tutoring.

We also offer enrichment Te Reo classes for students who show interest in Te Reo.



Celebrations

Over the past few years, Cambridge Middle School has proudly celebrated many successes that have demonstrated the importance of commitment, application and passion.

We have been placed first in Stage Challenge twice, first in Pulse twice, first in Rock Quest, first in Regional Literacy Quiz three times, winners four times in HETTANZ Student Fashion Awards, and well placed in other competitions.

Our school itinerant music programme consistently has 200 students, receiving tuition on a number of instruments.

We also provide individual tutoring for students in our Arts Academy.

Our Science Lab gives us the resources necessary to extend our learning programmes.

We encourage the development of resilience and a growth mindset.

Risk takers require a comprehensive safety net and our welfare programme provides this.

We challenge all students to look out for opportunities that will allow them to find out more about their potential.

We encourage students to show initiative.

You and your child are encouraged to be actively involved on a four year journey that has the ability to make a significant difference in their life.

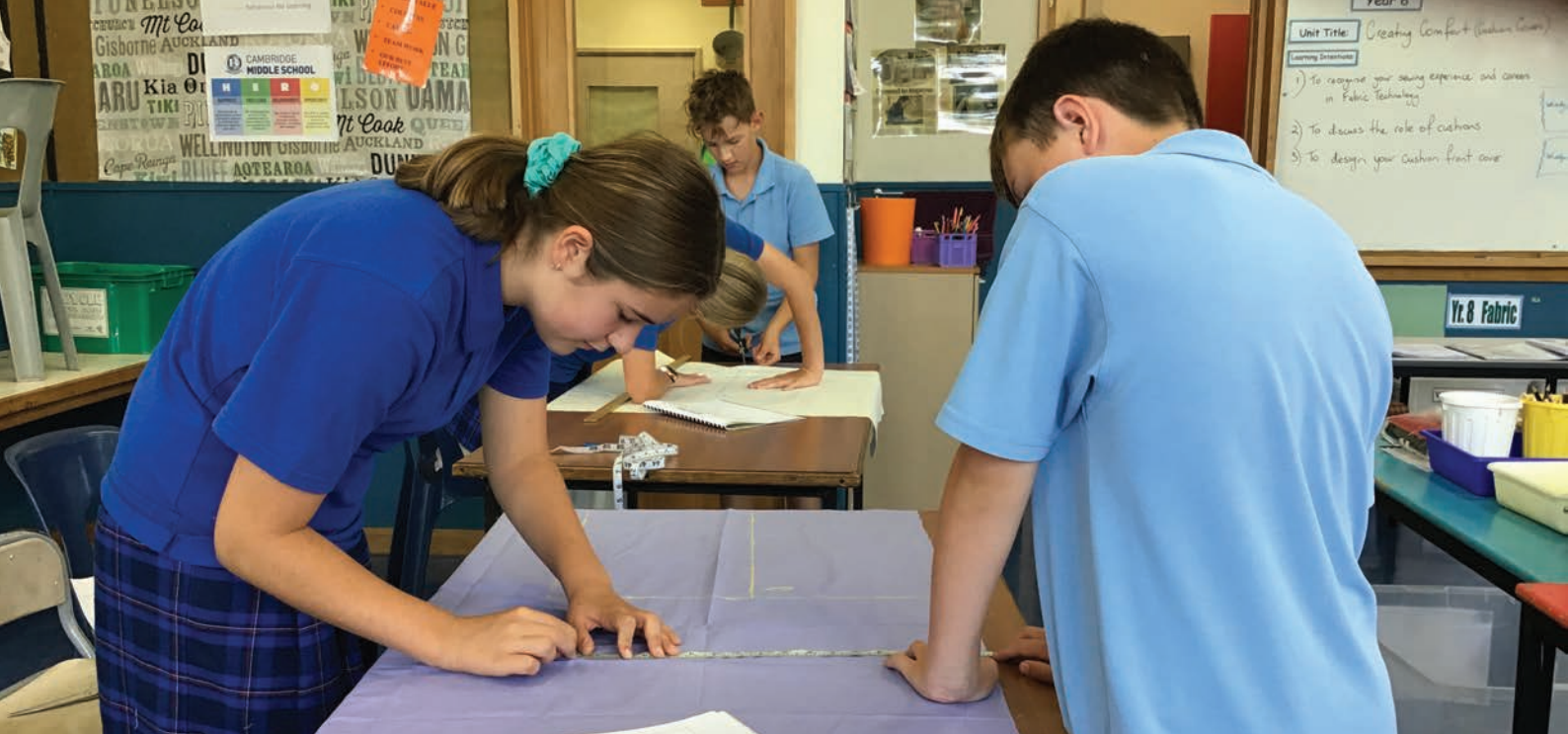
Arts Academy

New Zealand's vision as stated in The New Zealand Curriculum is: "...for young people who will be creative, energetic and enterprising."

At Cambridge Middle School we see our Arts Academy as providing an additional opportunity for students to learn through a creative context and in doing so their motivation and passions can be explored.

Students audition for a place in the Arts Academy in music, drama or dance. By celebrating their talent we are ideally positioned to intertwine all learning areas into a meaningful and challenging programme.





P.T.A

This association holds its A.G.M. in April. The election of officers plus committee members usually number 3-10 personnel - no willing person is ever turned away. Two or three staff members are given the responsibility of representing their colleagues at executive meetings.

Whaanau

Our Whaanau Support Group play an important role in the education of our students.

Cambridge Middle School tries to involve whaanau in numerous ways throughout the year.

The purpose is to engage our Maaori students in learning at school;

- To engage whaanau, hapu, and iwi positively in their child's learning both inside and outside the classroom;
- To enhance our local curriculum to reflect the Maaori identity, language and culture in each area.

School Services

Lunch Orders

Monday, Tuesday and Wednesday

Orders need to be placed online with Your Lunch Box the previous day.
www.yourlunchbox.co.nz

Thursday and Friday

Orders need to be placed online with Gourmet Delicious before 9am on the day.
www.gdschoollunches.myshopify.com

Stationery

All students will be issued with a stationery list, which can also be found on our school website www.cms.school.nz. We do not sell stationery at school.

School Contact details

Office07 827 5135
Emailoffice@cms.school.nz
Website.....www.cms.school.nz
FacebookCambridge-Middle-School

Absentees

Mobile 021 0250 3796
Email attendance@cms.school.nz

Student Leaders

Students are nominated for this honour. From this group several are selected for leadership or responsibility roles. The leaders will meet regularly.

Major purposes of the leaders are:

- To allow the student voice to be heard in school affairs.
- To offer/plan/organise school activities so the needs of our students are met.
- To assist in fundraising activities.
- To organise specific school functions, such as an assembly to gain public speaking experience, organisation skills and to offer situations for fellow students to be recognised for individual achievements.
- To show prospective visitors and families around the school.



Badges

Badges will be presented to students who demonstrate the school HERO values in academic, service, sporting, leadership and cultural areas. See our website for the badges criteria.



External Services

Counselling

www.cambridgelifeskills.co.nz

Cambridge Middle School offers a counselling service using counsellors paid for from the Lifeskills Trust. Counsellors are available most days of the week.

Health Centre

We operate a Health Centre from our modernised Hauora Health Building on Grey Street. Helen Smith, our Public Health Nurse manages the clinic. This can be used as a 'drop in' centre by the Cambridge Community.

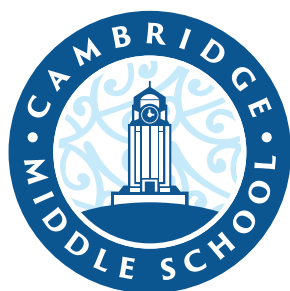
Mana Hapori

Mana Hapori is a community service that works to strengthen the individual, whaanau, and community. We work with people to break down cultural and relational barriers and build bridges of understanding and reconciliation.

Find out more

at www.manahapori.co.nz
or facebook.com/manahapori/

Vision



**CAMBRIDGE
MIDDLE
SCHOOL**
CONNECT · INSPIRE · GROW

Values

h	e	r	o
HAPPINESS	EXCELLENCE	RELATIONSHIPS	OPPORTUNITY
We provide an environment where everyone's identity is nurtured and they are cared for and safe.	We encourage the pursuit of personal best in environments that are engaging and innovative.	We create a sense of belonging through valuing diversity, kindness and respect.	We offer a variety of meaningful and enriching experiences to enhance our lives.

Strategic Goals 2021

**Developing
Capability/Ako**



**Curriculum/
Marautanga**



**Community/
Whanaungatanga**



**Te Reo Me
Tikanga Maaori**





Sports Leaders

Students are nominated by their class/team. From these nominations a group of Sports Leaders are selected. The Sports Leaders will meet regularly for training and planning school-wide sport events.

- Major purposes of the Sports Leaders are:
- To offer/plan/organise/assist school sporting opportunities/events
- To raise house/team morale
- To provide leadership at school sporting events
- Recognise sporting excellence and promote sporting events at assembly

Elite Teams

Throughout the year students who have been identified as having a high aptitude for learning generally or in a specific area e.g. art/maths/science, are given the opportunity to participate in the School's Enrichment Programmes.

- Otago Maths
- Bay Maths
- Kids Literacy Quiz
- Waikato Science Fair
- Waimaths
- Music
- Technology
- Visual Art
- Digital Music
- HETTANZ Student Fashion Competition

CMS Ambassadors

Ambassadors are nominated by staff members based on the HERO values they have shown in their school and the way they conduct themselves. These students exemplify our HERO values and consistently model these in all they do at CMS. As Ambassadors they need to be role models in and around the school.





Board of Trustees

Our elected Board of Trustees has five members plus a staff trustee and the Principal.

The Board sets the direction for the school through its Charter and Policies (Governance).

The Principal determines the implementation on a day to day basis. (Management).

Meetings are usually held the third Monday of the month, although meetings are not necessarily monthly.

For 2021 The Following Constitute Our Board Of Trustees

CHAIRPERSON Bob White

PRINCIPAL Daryl Gibbs

PARENT

REPRESENTATIVES Philippa Burchett
Justin Read
Rebecca David
Harry Wilson

STAFF TRUSTEE Belle Paterson

Each member has made themselves available for any topic of discussion that is seen to be part of this school's charter (functions and operations). Your Board has an important governance role in the teaching and learning outcomes at Cambridge Middle School. Curriculum and management matters are the direct responsibility of the Principal.

This school is a member of the New Zealand School Trustees Association NZ (S.T.A.).





Opportunities at CMS

At Cambridge Middle School we pride ourselves on being able to offer various opportunities for our students to learn and grow.

Academic

Science Fair
Waimaths
Bay Maths
Otago Maths
Literacy Quiz
Maths Extension
Literacy Extension
Science Extension
Technology Extension
Kiwi Competitions
- University of Canterbury

The Arts

Dance Extension
Drama Extension
Art Extension
Te Reo Extension
Choir
Kapa Haka
Music Lessons
Production
Drum Line
Rock Bands
School Band

Service to School

Ambassadors
Student Leader
Librarian
Office Duty
Home Hosting
Sports Leader
Road Patrol
Umpiring

School Sports Competitions

Swimming Sports
Cross Country
Totara Springs
Athletics
WIMSS
NZ Aims

We also offer a number of sporting opportunities outside of school.

Home Learning

The policy for home learning is as follows:

1. It is a habit to be fostered; but optional.
2. Any home learning should consist of the following:
 - enjoyment/pleasure;
 - re-enforcement of current learning;
 - no longer than 45 minutes daily.
3. There is to be no set home learning that is out of context or a project that is not part of an ongoing in-class programme.
4. Students may voluntarily undertake home learning at school, e.g. lunchtime, before school etc.
5. We acknowledge that children can lead busy lives outside school and also need time to be children. We encourage them to explore widely by taking up a sport, instrument or creative hobby.
6. Students have a responsibility to stay up-to-date with class work.



Sports

Our courts are laid with Tiger Turf providing us with an all weather court. Check out our school website for more information on each sporting code.

School Based

- Physical Education Programme
- Activities at lunchtime e.g. inter-class competitions, practice sessions, fun games.
- Competition: there are several compulsory sessions - Athletics, Cross Country and Swimming.

Region

Waikato Intermediate and Middle Schooling Sports:

During the year we are given the opportunity to enter the competitive arena via the following sports: Athletics, Badminton, Basketball, Cricket, Cross Country, Football, Hockey, Netball, Rugby, Swimming, Touch, Triathlon and Volleyball. Teams/individuals are chosen on merit, along with a high standard of sportsmanship, correct sports uniform and citizenship.

NZ Aims Games - An opportunity for elite sports people to participate against the country's greatest. Held in Tauranga/Mount Maunganui during September. It is the biggest multi-sport event for 11, 12 and 13 year olds in Australasia with over 10,000 athletes attending.

Local

Teams are entered in the following union/association competitions: Basketball, Cricket, Football, Hockey, Netball, Rugby and Touch. Some of the above codes are catered for via clubs. We support these groups by promoting, advertising and referring interested students. Outside the pursuits already mentioned CMS also promotes: Squash, Cycling, Lacrosse and Equestrian along with a variety of other sports.

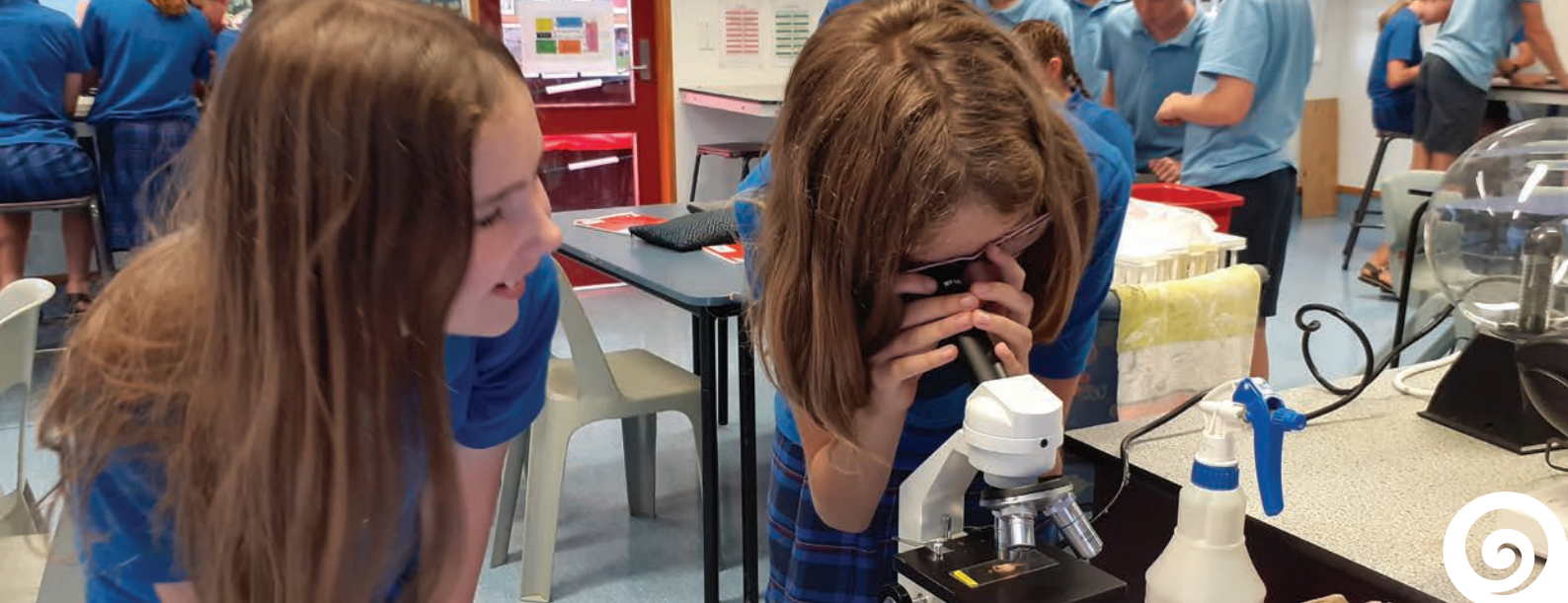
International Students Japanese Exchange

We are a signatory to the International Code of Practice. We have a growing number of international students and enquiries to attend Cambridge Middle School - for both long and short term study.

Every year we host a number of Junior High School students from various parts of Japan. One school who visit us annually is Makuhari Junior High School and in return our senior students are given the opportunity to return to Makuhari Junior High School in September/October.

They help form a party of 60 which is

comprised of students from Morrinsville, Te Awamutu, Cambridge Middle, Maeroa, Berkley, Peachgrove, Matamata, Hamilton Junior High, Rototuna Junior High and Melville schools. The 13 day visit is highly sought after, in that such an experience stands each person in good stead in their future years.



PB4L in Class

Behaviour Management

Cambridge Middle School is a PB4L school. PB4L is a Ministry of Education initiative where students are taught appropriate behaviour that will ultimately benefit their learning achievement. Clear processes are in place to support students to modify their behaviour.

PB4L is an evidence-based framework that looks at behaviour and learning from a whole school as well as an individual student perspective. It is a process for teaching social and behavioural skills and helps CMS to develop a positive, proactive, and systematic approach based on school data. It takes the approach that opportunities for learning and achievement increase if:

- the school environment is positive and supportive
- expectations are consistently clear
- students are consistently taught expected behaviours
- expected behaviours are consistently acknowledged
- inappropriate behaviours are consistently responded to in a fair and equal way

What You Will See at CMS

1. School-Wide Expectations

Four positively stated universal behaviour expectations - HERO.

2. Teaching Behaviour

Behaviour expectations are taught directly to students in classroom time. Lesson respond to need.

3. Positive Reinforcement

Systems and practices to encourage positive behaviour, including high levels of positive reinforcement and positive teacher

attention and feedback to strengthen those behaviours.

4. Consistent Consequences

Procedures in place to discourage inappropriate behaviour. These include the enforcement of predictable consequences consistently and fairly.

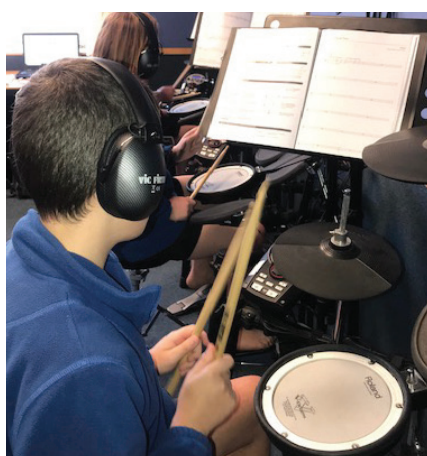
5. Data-based Decision Making

Discipline data will be systematically gathered, analysed and used to monitor and evaluate the effectiveness of PB4L systems and practices.

24-7 Youth Workers

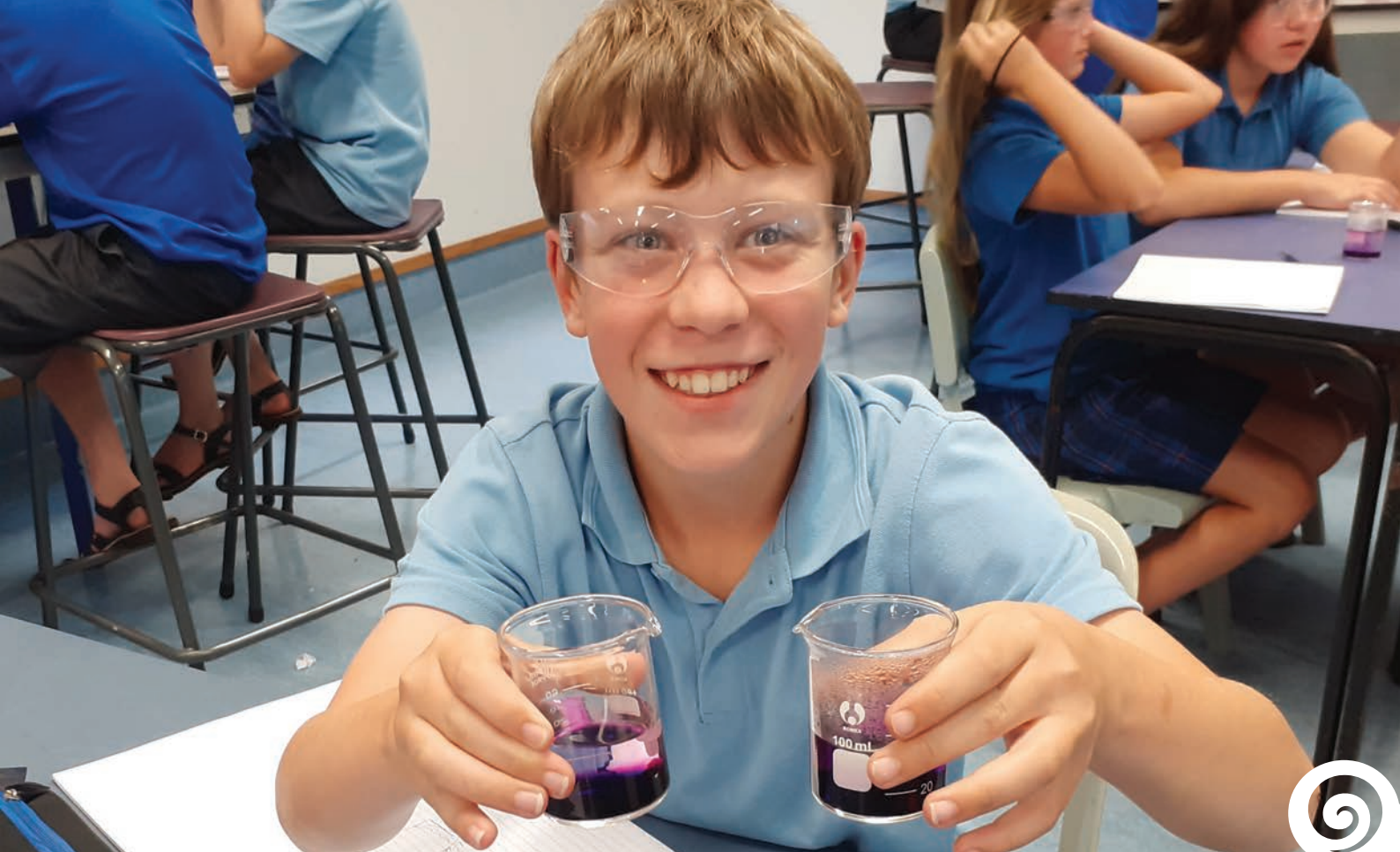
We are fortunate to have a connection with Raleigh Street Christian Centre who provide us with two Youth Workers. They are an essential part of our school's pastoral team. During the week they will be out in the playground at break times running lunchtime activities, joining in with sport or simply hanging out with students. Every Monday, Wednesday and Friday morning tea they help with our Kickstart Breakfast Club serving milk, Weet-Bix and Milo (in the colder months).

The remaining hours are in class time where they are helping out with school led activities, one-on-one mentoring, helping with school trips, etc. The Youth Pastor meets with the Key Deputy Principal weekly to plan and review to ensure transparency and effective practice.



Communication

1. The home and the school have a shared responsibility to:
 - (a) define, promote and expect acceptable standards of behaviour travelling to and from school, and whilst at school
 - (b) keep each other informed of breaches of that code of conduct
 - (c) ensure that issues are discussed with all parties and a course of appropriate action taken.
2. The Cambridge Middle School Board of Trustees believes that students aged 10-15 years are capable of taking responsibility for their own behaviour and need to be supported as they work through the negative consequences which some actions incur. We also believe in the character building exercise of giving the student time and opportunity to bring issues to the notice of their parents prior to dialogue with/between school and home.
3. Should an offence occur which breaks a law, every effort will be made to bring this to the attention of parents on the day the offence occurs or comes to the notice of the school. That contact may have to be at the parents place of work.
4. Such other issues that occur, which affect the punctuality of the student for school, or the ongoing smooth running of the school will be given careful consideration and where deemed necessary, dialogue will be initiated with the caregiver.
5. In every situation which arises, thought will be given to choosing a course of action which:
 - (a) is appropriate to the situation
 - (b) is sensitive to the needs of the student/and others involved.
6. Where counselling or other support is required, every effort will be made to meet the need of the student, either through the school or an appropriate outside agency.



Enrolment/Annual Student Costs/Donations

CATEGORY A:

Specialist Programme Costs

Technology/Arts.....\$40.00 per pupil

Some ingredients and/or materials may be additional

Cultural.....\$20.00 per pupil

Outside Performers

CATEGORY A: Total cost payable \$60.00

CATEGORY B:

School Donations Year 7 and 8 Only

\$20.00 per term\$80.00 per pupil

These donations are an essential part of the school's operations budget. This will help the school provide additional opportunities and resources.

Category B: Total cost payable \$80.00

Category A & B: Total \$140.00

Year 9 and 10 students are NOT asked to pay Category A and B.

CATEGORY C:

Other Possible Programme Costs

Costs that could occur periodically for some students during the year (approx. costs only)

Outdoor Education

Y7/8.....\$175.00

Y9/10 No cost

Sports Trips.....\$300.00 - \$400.00

Itinerant Music Classes - 10 Lessons. \$150.00

Technology/Art Extension Group\$50.00

Credit

The Board of Trustees does not extend credit. You are able to set up a direct debit payment at the school office. We also have EFTPos available. There is also an option to pay through the caregiver portal. Further information will be provided during Term 1. If Category A: Specialist Programme Costs are not paid then your child may be excluded from an outside performance or unable to take home their Tech Arts product.



School Guidelines

1. Smart watches should have the communications function disabled during school hours. Phones must be given to the classroom teacher upon arrival at school and be turned off. Cellphones taken off a student for misuse will need to be collected by a parent/caregiver from a member of the Senior Leadership Team.
2. Students arriving late or leaving early must sign in/out of the school office. (For health and safety purposes).
 - a) Students who wish to leave the school grounds to keep appointments during the school day, or to do errands etc. in the lunch hour should bring a note, to be countersigned by their class teachers and a member of Senior Leadership Team.
3. Cycle Transport
 - a) Students arriving at school by bicycle will dismount on the left hand side of the road and wheel their bikes into the stands. The reverse procedure applies as these students leave school.
 - b) The cycle stands are out of bounds during the school day.
 - c) Clare Street between Grey and Victoria Streets is a no cycle zone.
4. All hair and nail colour must be the child's own natural colours.
5. No sweets, chewing gum or fizzy drinks of any kind are allowed at school. From time to time they may be given as a treat from the class teacher, or as part of a celebration.
6. All damage to school property must be reported immediately to the office. Wilful damage to school property must be paid for.
7. Students in uniform are not allowed in town before or after school. This is an initiative enforced by the Community Police.
8. Valuables
 - Students are to be advised that items of jewellery are not permissible at school.
 - Devices and IT equipment can come to school for use if it complies with our BYOD requirements.
 - Miscellaneous: such items as watches, calculators, musical instruments, sports equipment, etc. should be clearly named.
9. The school uniform must conform with points 1-12 on page 28 (School Dress: Uniform).
10. Demonstrate respect always towards people, property and environment.

Transport

RATIONALE: To maintain a Transport Policy with the emphasis on cycling, so as to have safety guidelines that home/school should adhere to as members of Cambridge Middle School.

Rules and Regulations

1. That all students who cycle at any given time, to and from school, wear (correctly) a safety approved helmet.
2. That all cycles are kept to a minimum safety standard:
 - each cycle to have two working order brakes
 - handle bars, seats and wheel lockings to be in good working order
4. Routes to and from school: If your child is going to and from school by a scooter, bike or walking, please take the time to go through with them the safest route. Do it with them so that they are confident and able road users.
5. We endorse the police initiative of students not going through town.
6. Clare Street between Victoria and Grey is a cycle-free zone.
7. For field trips, when children are transported by vehicles all students are to be put in seat belts.
8. Bus rules must be adhered to at all times whether commuting to and from school or for class/team field trips.

Pedestrian and Cycle Crossing

For all students commuting to and from school and needing to cross State Highway 1 at any point, it is compulsory to use the pedestrian crossing.

To ensure greater safety, adults and road patrol students supervise the crossing at the following times:

Morning - 8.20am until 8.30am

Afternoon - 3.10pm until 3.25pm

The Kea crossing on Clare Street is patrolled every morning (8.20am until 8.30am) and afternoon (3.10pm until 3.25pm).

Bus Transport

The Ministry of Education provides free transport to Cambridge Middle School under legal prescribed conditions.

These conditions make students 'eligible' to use the transport provided. Eligible Year 7 and Year 8 students must have a residential address that is 3.2km or further from Cambridge Middle School. This changes for our Year 9 and Year 10 students to 4.8km or further.

Cambridge Travel Lines is the company which has the contract to provide the transport for eligible students. Those rural schools catering for students up to Year 8 have contracted services to carry eligible students to the school nearest their home. This makes them ineligible for free transport to Cambridge Middle School unless they have been attending a contributing school.

Please be aware that Cambridge Travel Lines is under no obligation to provide transport for ineligible students.

In choosing to send your son/daughter to Cambridge Middle School as an ineligible student in terms of transport, you are also taking responsibility for their transport to school.

At this time, there is a bus service between Cambridge Middle School and Leamington.

If you are unsure of eligibility please make contact with Cambridge Travel Lines 07 827 7363.





Devices

Google Apps for Education (GAPE Suite)

Students will have full access to the full Google Apps for Education Suite (GAPE) while at Cambridge Middle School. Students will use the tools provided to enhance and support their learning in a variety of ways. For the student to have full access to GAPE the school will need to activate a school Gmail account for the student. This email account will be monitored by the class teacher through Family Zone. Although the email account will be monitored by the class teacher, any parent/caregiver who would also like access to the email address and password can request it from the school so that you are able to see what your child is using it for.

In the unlikely event that a student uses their email account inappropriately or otherwise breaches the cyber safety rules or Use Agreement; their email account will be suspended for a period of time. If the student leaves Cambridge Middle School, then their email account will be closed.

Devices at CMS

At Cambridge Middle School we have 1:2 devices in each classroom. These are made up of a combination of Netbooks and Chromebooks. Our teachers use a blended approach where traditional teaching methods are enhanced by the use of ICT/technology in our classrooms. We do not have 'digital' classes where all work is completed on a device.

Bring Your Own Devices (BYOD)

BYOD allows students to bring their own device (Chromebook, Netbook or laptop) to school. It is a tool to assist them with their learning. It allows them to access the internet.

There are a number of different devices that students use but if they decide to bring a device to school then there are certain requirements to be aware of.

Cambridge Middle School's minimum requirements for a device to assist their learning at school are:

- 7.9" screen;
- At least enough battery power for 5 hours learning;
- Internet capable;
- Ability to create and edit documents using Google tools;
- Suitable, durable bag/protective cover.

Strongly recommended:

- A keyboard

Please remember that ALL classrooms will have a minimum of one device/every two students so there is no real reason to feel that students will need to provide their own device. It is our strong belief that we have sufficient devices to allow students in every class to have access to devices when and if they are required for their learning.

The Board of Trustees continues to support us by providing sufficient devices for our classrooms.

Please don't feel pressured to buy a device. School work carried out on a school device can still be picked up at home through their account and worked on. The Cyber Safety Use Agreement will govern the use and access of all devices at/from the school.



Uniform

POINTS TO NOTE: It is expected that school uniform be worn correctly and with pride.

1. Any student who has a piece of their uniform missing should carry a note of explanation, signed by their parent/caregiver.
2. Hair ties are to be blue, red, white or black. No makeup is to be worn.
3. Students should not wear a combination of PE or school uniform. It's either one or the other.
4. PE shorts may be black sport shorts or plain black active wear tights. No logos.
5. Defacing of any garment or property is not permitted.
6. Naming of any garment is a pre-requisite and could be checked periodically by the staff.
7. Lost Property: This is kept in a container by Room 4.
8. CMS hats are a compulsory item in Term 1 and Term 4. They must not be worn during class time.
9. Jewellery that can be worn at school is a watch and one or two stud earrings per ear only. No other earrings, stretchers or body piercings. Bone carvings, crosses etc. may be worn but must not be visible. Medic Alert bracelets/medallions may be worn and visible.
10. All black lace-up or buckle school shoes that do up, no slip-ons.
11. Plain black sandals, not scuffs, slides or jandals.
12. Socks can be navy, white or black. The crew or knee high length uniform socks. Correct colours only and no logos.

Students need to wear the correct uniform to and from school. They can wear a navy, white, red or royal blue beanie, scarf or gloves with no logos, to and from school, but not at school.

All items are summer and winter uniform. These can be worn at anytime during the school year. The aim of this policy is to allow students to wear their uniform to suit their needs and the weather conditions - it is also a cost saving method for families.

Cambridge Middle School uniform is available for purchase from The Warehouse Cambridge or online at www.schooltex.co.nz.

Sports Uniform

Black rugby shorts or black active wear tights with no logos and team colour shirt.

Team colour PE shirts

- Koowhai (Yellow)
- Kauri (Green)
- Rata (Red)
- Manaia (Navy)
- Pounamu (Teal)
- Paakura (Purple)

Please confirm team colour prior to purchase

Sports Hoodies can be purchased from Image Apparel, Empire Street, Cambridge and be worn at sports events and for PE at school only. The name of the sport the student is involved in will be embroidered under the school logo on the front of the hoodie and the student's name on the back (optional). Please note it is the sport name, not the team name. Please see www.imageapparel.co.nz for further information and to order. They do not replace the Polar Fleece.

Students are allowed to wear sports clothes from school (but not to school unless otherwise stated for a sports day).

Mufti

At various times throughout the year students may be given the option to dress in casual street clothes for the following reasons:

1. As a means, usually at the request of the school's Student Leaders, for raising funds. Present policy is - such days may only be used for raising funds for charitable purposes e.g. Daffodil Day. Any variance from this can only occur at the discretion of the Principal.
2. Field Trips: There may be a time that mufti is better for a particular trip e.g. bush trip.
 - An amount is payable for all students who wish to take advantage of mufti day.
 - All clothing to be clean, tidy and in good repair, practical for school purposes.
 - Footwear is a must.
 - Make-up is not to be worn. Jewellery must adhere to the school policy.
 - New clothing is to be discouraged - existing wardrobe is all that is necessary.



CAMBRIDGE MIDDLE SCHOOL

UNIFORM PRICE LIST

1 June 2020

Schooltex Loyalty #9991701

Item Code	Barcode	Description	Price	Items
SHORTS				
999999110688	9401034089602	SUMMER SHORT DARK NAV 6	\$26.99	
999999110688	9401034089619	SUMMER SHORT DARK NAV 8	\$26.99	
999999110688	9401034089626	SUMMER SHORT DARK NAV 10	\$26.99	
999999110688	9401034089633	SUMMER SHORT DARK NAV 12	\$26.99	
999999110688	9401034089640	SUMMER SHORT DARK NAV 14	\$26.99	
999999110688	9401034089657	SUMMER SHORT DARK NAV 16	\$26.99	
999999110688	9401034089664	SUMMER SHORT DARK NAV 76	\$32.99	
999999110688	9401034089671	SUMMER SHORT DARK NAV 80	\$32.99	
999999110688	9401034089688	SUMMER SHORT DARK NAV 84	\$32.99	
999999110688	9401034089695	SUMMER SHORT DARK NAV 88	\$32.99	
LONG NAVY SOCKS				
999999112563	9419693141500	C SOCK A9 NAVY 3 SZ03-05	\$13.99	
999999112563	9419693141517	C SOCK A9 NAVY 4 SZ06-08	\$13.99	
999999112563	9419693141524	C SOCK A9 NAVY 5 SZ09-11	\$13.99	
999999112563	9419693141531	C SOCK A9 NAVY 6 SZ12-14	\$13.99	
CULOTTES				
999999108664	9419822491506	TEX CULOTTES TRT023 6YRS	\$42.99	
999999108664	9419822491513	TEX CULOTTES TRT023 8YRS	\$42.99	
999999108664	9419822491520	TEX CULOTTES TRT023 10YRS	\$42.99	
999999108664	9419822491537	TEX CULOTTES TRT023 12YRS	\$42.99	
999999108664	9419822491544	TEX CULOTTES TRT023 14YRS	\$46.99	
999999108664	9419822491551	TEX CULOTTES TRT023 16YRS	\$46.99	
999999108664	9419822680375	TEX CULOTTES TRT023 18YRS	\$46.99	
SKIRTS				
999999108719	9419822860265	BOX PLEAT SKIRT TRT023 6	\$39.99	
999999108719	9419822860272	BOX PLEAT SKIRT TRT023 8	\$39.99	
999999108719	9419822860289	BOX PLEAT SKIRT TRT023 10	\$39.99	
999999108719	9419822860296	BOX PLEAT SKIRT TRT023 12	\$39.99	
999999108719	9419822860302	BOX PLEAT SKIRT TRT023 14	\$39.99	
999999108719	9419822860319	BOX PLEAT SKIRT TRT023 16	\$39.99	
999999108719	9419822860326	BOX PLEAT SKIRT TRT023 18	\$44.99	
999999108719	9419822860333	BOX PLEAT SKIRT TRT023 20	\$44.99	
LONG WHITE SOCKS				
999999110148	9415021194576	UNDER THE KNEE SOCKS WHT 13-3	\$6.99	
999999110148	9415021194606	UNDER THE KNEE SOCKS WHT 4-6	\$6.99	
999999110148	9415021194637	UNDER THE KNEE SOCKS WHT 7-9	\$6.99	
CREW SOCKS				
999999112561	9401033168803	2PK PLAIN CREW SOCK BLK 5-8	\$6.99	
999999112561	9401033168834	2PK PLAIN CREW SOCK NAV 5-8	\$6.99	
999999112561	9401033168865	2PK PLAIN CREW SOCK WHT 5-8	\$6.99	
		ADULT SIZES S/M/L	\$9.99	
TIGHTS				
999999112564	9401032827435	G PLAIN TIGHTS BLK 10-12YRS	\$7.99	
999999112564	9401032827442	G PLAIN TIGHTS BLK 13-16YRS	\$7.99	
999999112564	9401032827510	G PLAIN TIGHTS NAV 10-12YRS	\$7.99	
999999112564	9401032827527	G PLAIN TIGHTS NAV 13-16YRS	\$7.99	
POLO T-SHIRTS				
999999151535	9401063121670	CAMBRIDGE POLO WE ROYAL 8	\$42.00	
999999151535	9401063121687	CAMBRIDGE POLO WE ROYAL 10	\$42.00	
999999151535	9401063121694	CAMBRIDGE POLO WE ROYAL 12	\$42.00	
999999151535	9401063121700	CAMBRIDGE POLO WE ROYAL 14	\$42.00	
999999151535	9401063121717	CAMBRIDGE POLO WE ROYAL S	\$45.00	
999999151535	9401063121724	CAMBRIDGE POLO WE ROYAL M	\$45.00	
999999151535	9401063121731	CAMBRIDGE POLO WE ROYAL L	\$45.00	
999999151535	9401063121748	CAMBRIDGE POLO WE ROYAL XL	\$45.00	
999999151535	9401063121755	CAMBRIDGE POLO WE ROYAL 2XL	\$45.00	
POLAR FLEECE SWEATSHIRTS				
999999109690	9419693748624	CAMBRIDGE MID PF TOP WE RYL 8	\$46.99	
999999109690	9419693748631	CAMBRIDGE MID PF TOP WE RYL 10	\$46.99	
999999109690	9419693748648	CAMBRIDGE MID PF TOP WE RYL 12	\$46.99	
999999109690	9419693748655	CAMBRIDGE MID PF TOP WE RYL 14	\$46.99	
999999109690	9401034878916	CAMBRIDGE MID PF TOP WE RYL 16	\$46.99	
999999109690	9419693748662	CAMBRIDGE MID PF TOP WE RYL S	\$54.99	
999999109690	9419693748679	CAMBRIDGE MID PF TOP WE RYL M	\$54.99	

999999109690	9419693748686	CAMBRIDGE MID PF TOP WE RYL L	\$54.99	
SOFT SHELL JACKETS				
999999151537	9401063121830	CAMBRIDGE SOFT SHELL JACKET WE NAV 8	\$90.00	
999999151537	9401063121847	CAMBRIDGE SOFT SHELL JACKET WE NAV 10	\$90.00	
999999151537	9401063121854	CAMBRIDGE SOFT SHELL JACKET WE NAV 12	\$90.00	
999999151537	9401063121861	CAMBRIDGE SOFT SHELL JACKET WE NAV 14	\$90.00	
999999151537	9401063121878	CAMBRIDGE SOFT SHELL JACKET WE NAV 16	\$90.00	
999999151537	9401063121885	CAMBRIDGE SOFT SHELL JACKET WE NAV S	\$100.00	
999999151537	9401063121892	CAMBRIDGE SOFT SHELL JACKET WE NAV M	\$100.00	
999999151537	9401063121908	CAMBRIDGE SOFT SHELL JACKET WE NAV L	\$100.00	
PUFFER JACKETS				
999999151536	9401063121762	CAMBRIDGE PUFFER JACKET WE NAVY 8	\$85.00	
999999151536	9401063121779	CAMBRIDGE PUFFER JACKET WE NAVY 10	\$85.00	
999999151536	9401063121786	CAMBRIDGE PUFFER JACKET WE NAVY 12	\$85.00	
999999151536	9401063121793	CAMBRIDGE PUFFER JACKET WE NAVY XS	\$95.00	
999999151536	9401063121809	CAMBRIDGE PUFFER JACKET WE NAVY S	\$95.00	
999999151536	9401063121816	CAMBRIDGE PUFFER JACKET WE NAVY M	\$95.00	
999999151536	9401063121823	CAMBRIDGE PUFFER JACKET WE NAVY L	\$95.00	
KNIT SHORTS (PE)				
6004	2016004103003	C/L/L KNIT SHORT BLK 8	\$21.99	
6004	2016004104000	C/L/L KNIT SHORT BLK 10	\$21.99	
6004	2016004105007	C/L/L KNIT SHORT BLK 12	\$21.99	
6004	2016004106004	C/L/L KNIT SHORT BLK 14	\$21.99	
6004	2016004107001	C/L/L KNIT SHORT BLK 16	\$21.99	
SPORT SHORTS (PE)				
999999112605	9419693650217	TEX SPORT SHORT BLK 8	\$24.99	
999999112605	9419693650224	TEX SPORT SHORT BLK 10	\$24.99	
999999112605	9419693650231	TEX SPORT SHORT BLK 12	\$24.99	
999999112605	9419693650248	TEX SPORT SHORT BLK 14	\$24.99	
999999112605	9419822292813	TEX SPORT SHORT BLK 16	\$24.99	
999999112605	9419693650255	TEX SPORT SHORT BLK S	\$26.99	
999999112605	9419693650262	TEX SPORT SHORT BLK M	\$26.99	
999999112605	9419693650279	TEX SPORT SHORT BLK L	\$26.99	
RUGBY SHORTS (PE)				
999999110686	2016683202004	RUGBY SHORTS BLK 8	\$18.99	
999999110686	2016683203001	RUGBY SHORTS BLK 10	\$18.99	
999999110686	2016683204008	RUGBY SHORTS BLK 12	\$18.99	
999999110686	2016683205005	RUGBY SHORTS BLK 14	\$18.99	
999999110686	2016683206002	RUGBY SHORTS BLK 16	\$18.99	
CMS CAPS				
999999145463	9401056310494	CAMBRIDGE MID CAP WE RYL OS	\$13.00	
999999145462	9401056310456	CAMBRIDGE MID BKT HAT WE RYL 55	\$20.00	
999999145462	9401056310463	CAMBRIDGE MID BKT HAT WE RYL 57	\$20.00	
999999145462	9401056310470	CAMBRIDGE MID BKT HAT WE RYL 59	\$20.00	
999999145462	9401056310487	CAMBRIDGE MID BKT HAT WE RYL 61	\$20.00	
PE UNIFORM RANGE - Rooms allocated to different houses				
999999122713	Kids	Kowhai - House Tee - Yellow 8-16yr, S-L	\$13.99-\$14.99	 
999999122714	Adults			
999999122713	Kids	Kauri - House Tee - Green 8-16yr, S-L	\$13.99-\$14.99	 
999999122714	Adults			
999999122713	Kids	Rata - House Tee - Red 8-16yr, S-L	\$13.99-\$14.99	 
999999122714	Adults			
999999122713	Kids	Manaia - House Tee - Navy 8-16yr, S-L	\$13.99-\$14.99	 
999999122714	Adults			
999999122713	Kids	Pounamu - Houe Tee - Cyan 8-16yr, S-L	\$13.99-\$14.99	 
999999122714	Adults			
999999122713	Kids	Pakura - House Tee - Purple 8-16yr, S-L	\$13.99-\$14.99	 
999999122714	Adults			

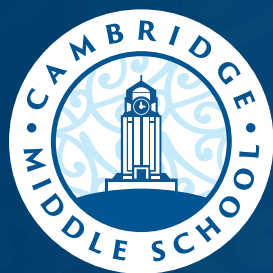
Don't forget up to 10% of sales from all Schooltex labelled garments go back to your school
Please Nominate Your School at Checkout

Laybys and Winz Quotes welcome



The Warehouse Cambridge
124 Wilson St, Cambridge
07-823 3588

Available online <https://www.thewarehouse.co.nz/c/schools/cambridge-middle-school>



**CAMBRIDGE
MIDDLE
SCHOOL**

CONNECT · INSPIRE · GROW

Clare Street, Cambridge 3434, New Zealand
P. +64 7 827 5135 E. office@cms.school.nz

 [cambridgemiddleschool](https://www.facebook.com/cambridgemiddleschool)

[www.**cms**.school.nz](http://www.cms.school.nz)